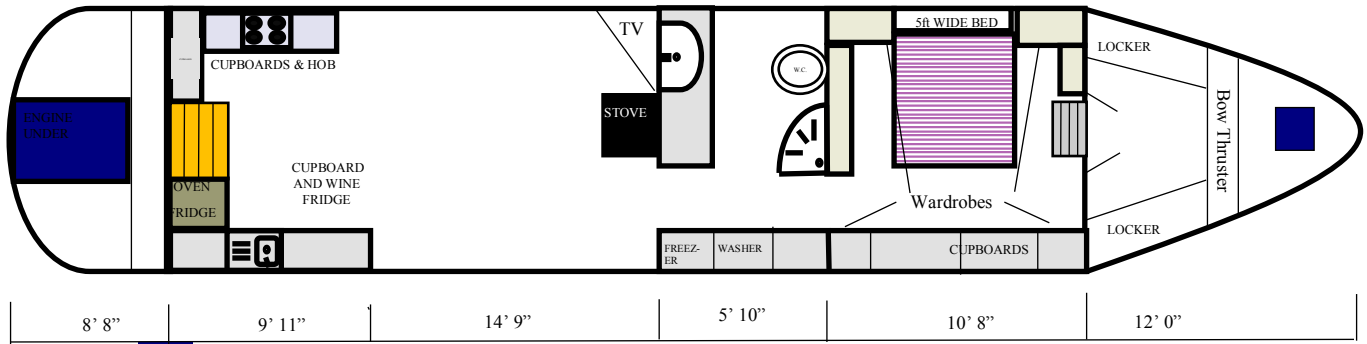


Aqua £149,000

62 ft x 12 ft • Aqualine Canterbury • 2015 • Widebeam



Guide to layout . Not to scale



Details:

- Berths: 2
- Toilet: Pump Out
- Heating: Webasto / Stove
- BSC: Expires 03/02/2024
- Blacking: 2018
- Engine: Barrus Shire 70H.P.
- Layout: Reverse
- CRT Reg. No: 523704
- CIN No:GB-AQB00540K515



Blisworth Marina

Blisworth Arm
Blisworth

Phone: 01604 879827

E-mail:

info@blisworthmarina.co.uk
www.blisworthmarina.co.uk



Steelwork

Length: 62ft
Type: Cruiser stern widebeam
Year built: 2015
Steel: 10-6-4



Appliances

Belling gas hob.
Belling gas oven.
Candy 240v fridge
Candy 240v freezer
Hotpoint 240v washing m/c
Baumatic 240v wine cooler



The information in this document is given in good faith and is accurate to the best of our knowledge. It does not result from a survey and is to help you decide whether to investigate further by having your own survey done or otherwise.

History & Documentation

One owner from new.
The overall build quality is excellent.
The hull was last blacked in 2018.
The engine was serviced in January 2021 with 180 hrs recorded.
The B.S.S. certificate expires on 03/02/2024.

Fit-Out

Linings: Cabin sides lined in oak plywood and decorative panels.. Ceiling is decorative panels and doors and frames are oak hardwood.

Flooring: Oak T&G flooring in galley with carpet in saloon and bedroom. The bathroom floor is tiled.

Windows: Double glazed silver anodized windows and portholes.

Engine & Gearbox

Yanmar Barrus Shire. 70hp. single lever control. Tachometer with hour meter, oil pressure gauge, temperature gauge.

Fuel tank: 95 gallon (approx.) integrated stern tank.

Water & Heating systems

Water tank: 300 Lt. Located under bed.

Water heating: Calorifier heated by engine, boiler and immersion heater.

Cabin Heating: Webasto Thermo Prop90 (9kw) diesel boiler with Finrads in the galley and saloon, towel rail in the bathroom and radiator in the bedroom.

Morso Squirrel stove in the saloon.

Electrical systems

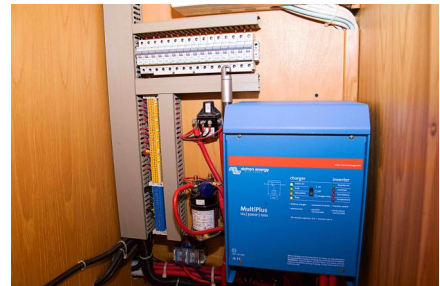
Alternators: 12v 50A charging engine starter battery.

12V 240A charging 600Ah AGM leisure batteries.

Inverter/charger: Victron Multiplus 12/3000/120

230v supply: From inverter or landline supplying 13A sockets and immersion heater.

Lights: Cabin lighting is 12V LED.



Bathroom: Large quadrant shower, pump out toilet and basin. Plenty of cupboards for storage.

Bedroom: Ample wardrobes and drawers, a king size bed.

Saloon: Loose furniture is not included in sale.